

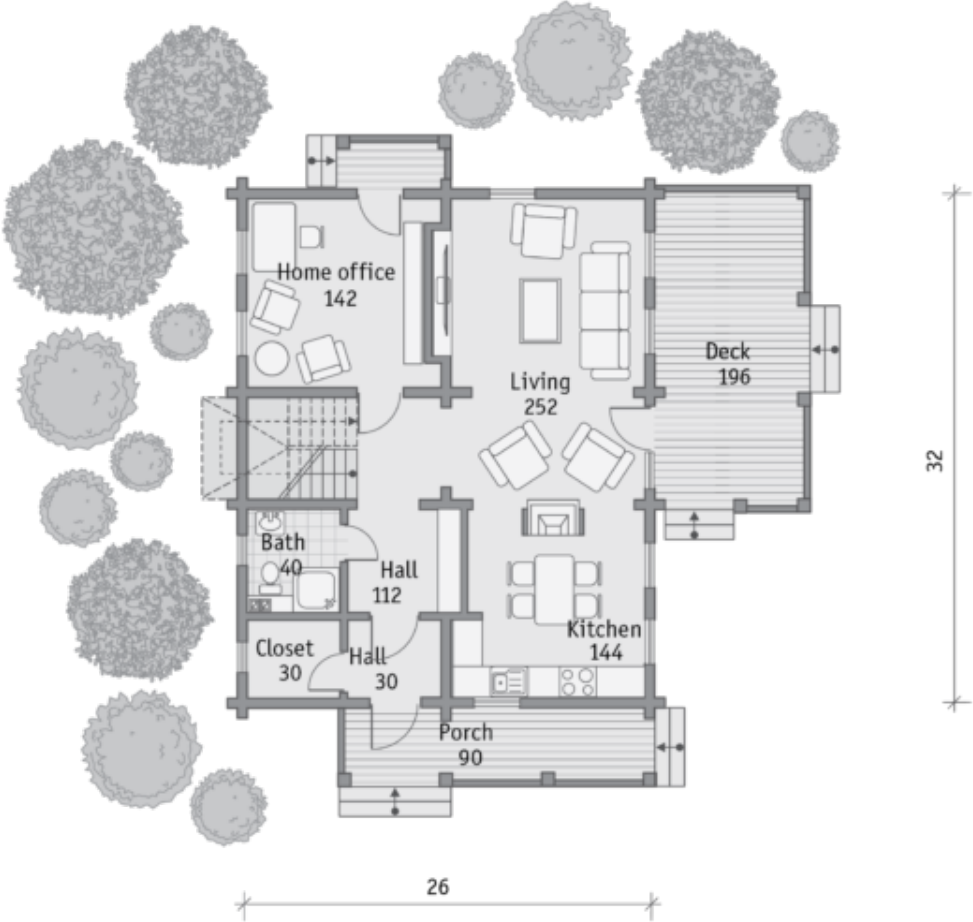


Floors:	2
Gross area:	2100 sq ft
Net area:	1540 sq ft
Bedrooms:	3
Bathrooms:	3
Windows area:	360 sq ft
Roof area:	1798 sq ft
Ridge height:	26 ft
Carport:	Yes

The classical symmetrical composition is brought to life by the introduction of the terrace and porch. However, traditional solution with the portico on the columns is still recognizable. In the interior, this

solution is supported by the central location of the staircase with rooms on both sides of it.

First floor



Second floor

