



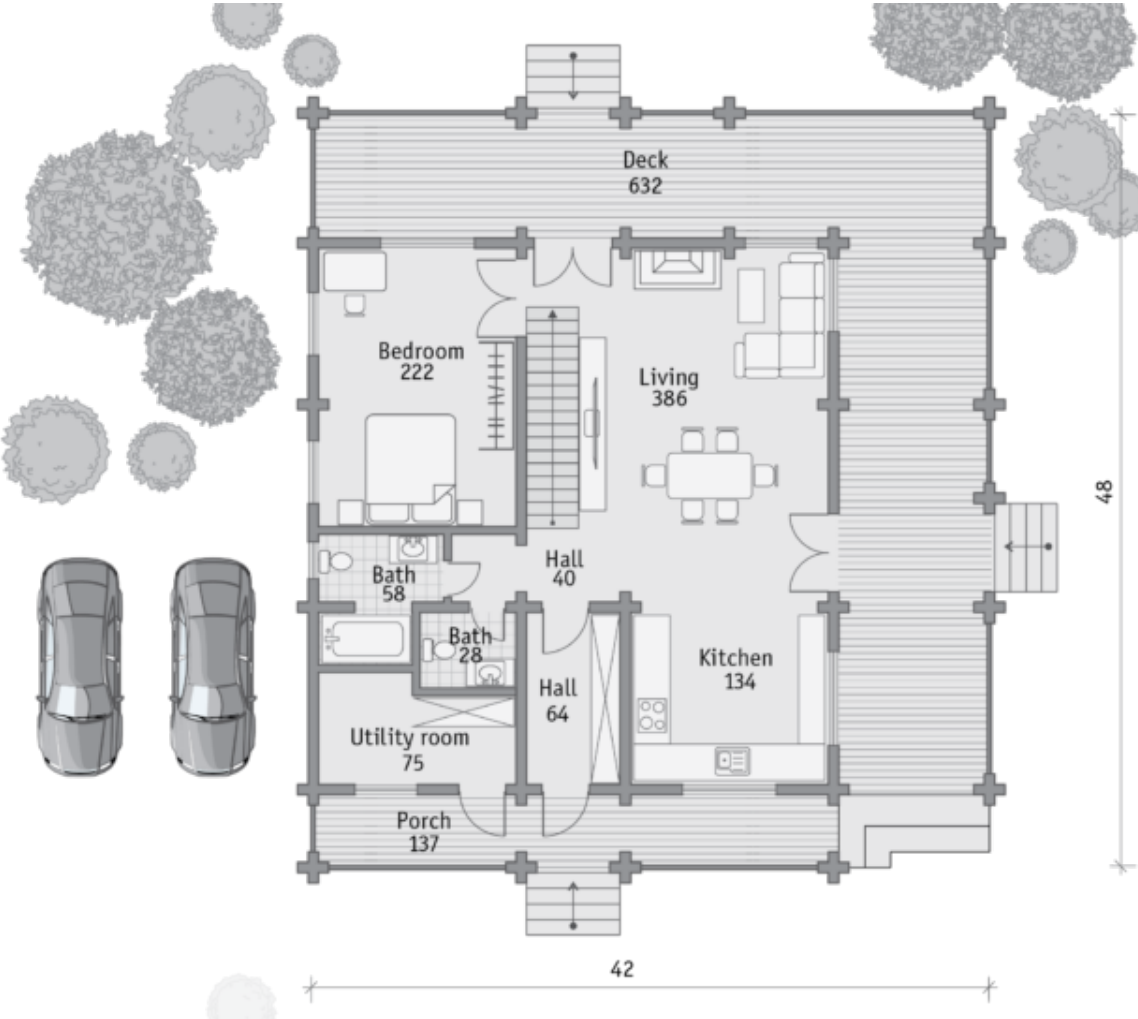
Design:	<b>SCANDINAVIAN HOME</b>
Floors:	<b>2</b>
Gross area:	<b>2950 sq ft</b>
Net area:	<b>1840 sq ft</b>
Bedrooms:	<b>4</b>
Bathrooms:	<b>3</b>
Windows area:	<b>422 sq ft</b>
Roof area:	<b>2906 sq ft</b>
Ridge height:	<b>23 ft</b>
Carport:	<b>Yes</b>

Alpine chalet features are easy to recognize in a wide secure roof with beautiful planed beams and

in a spacious terrace of this house.

The house with three independent entrances, four bedrooms and a double-lighted hall will suit a large family. A wide veranda under a canopy and a common balcony of the second floor for two rooms will allow you to enjoy nature in any weather.

First floor



Second floor

