



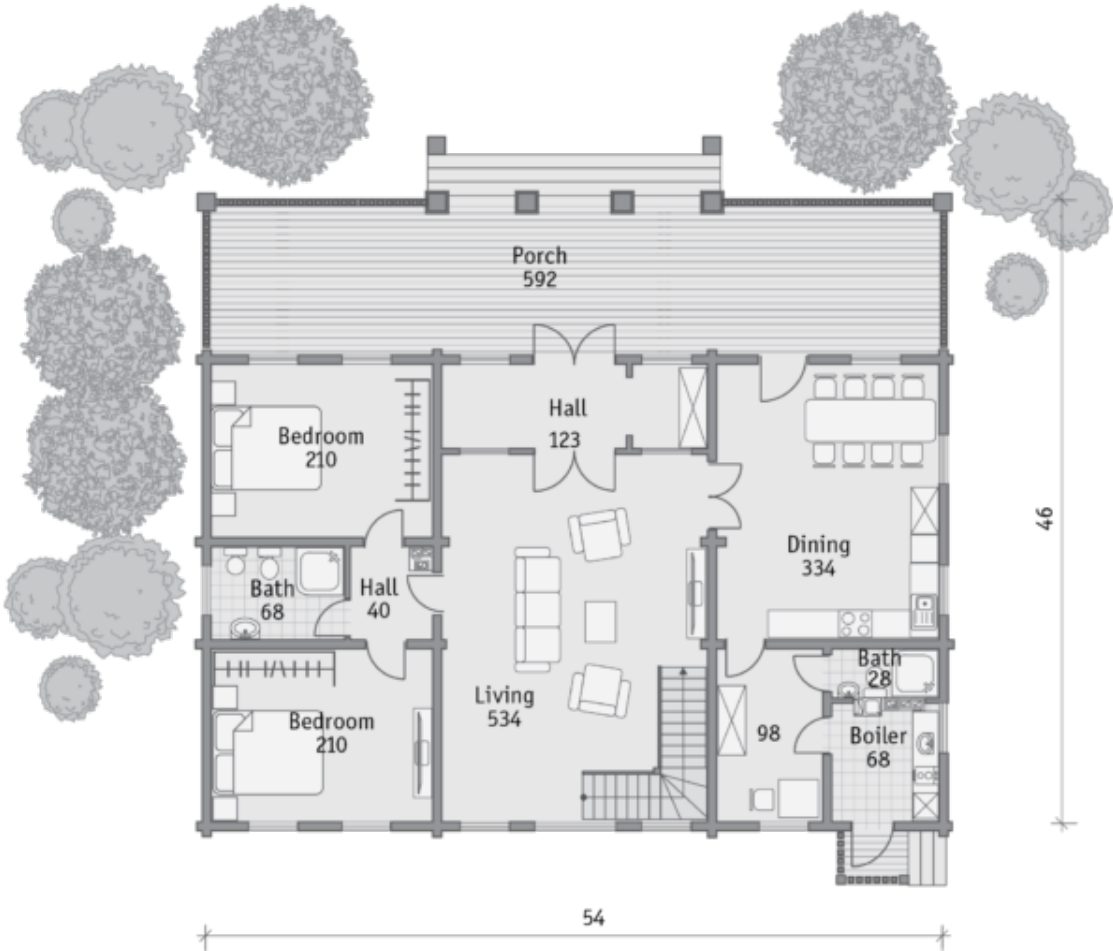
Design:	<b>SCANDINAVIAN HOME</b>
Floors:	<b>2</b>
Gross area:	<b>3200 sq ft</b>
Net area:	<b>2420 sq ft</b>
Bedrooms:	<b>4</b>
Bathrooms:	<b>3</b>
Windows area:	<b>541 sq ft</b>
Roof area:	<b>3294 sq ft</b>
Ridge height:	<b>36 ft</b>
Carport:	<b>Yes</b>

A classic manor house with a columned portico and a terrace speaks of solidity and adherence to

traditions.

Strictly symmetrical form, design of the central portal, columns and the pediment form a coordinated composition here. The layout is traditional: one wing is given for secondary rooms, while the other wing and the second floor â€” a living space.

First floor



Second floor





