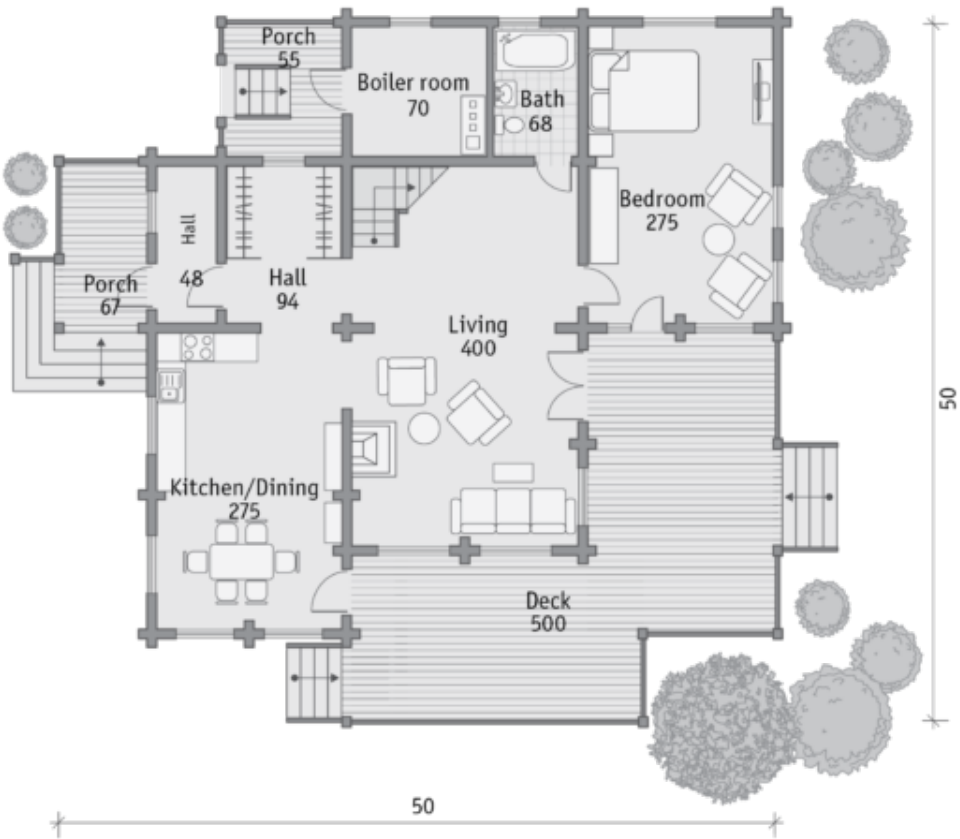




Design:	CONTEMPORARY
Floors:	2
Gross area:	2900 sq ft
Net area:	2190 sq ft
Bedrooms:	4
Bathrooms:	3
Windows area:	630 sq ft
Roof area:	2690 sq ft
Ridge height:	28.6 ft
Carport:	Yes

Open terrace, which can be accessed from the kitchen, from the living room and from the bedroom, in the summer promises to become a center of attraction for household members and guests. The second floor hall and the large living room on the first floor will be an alternative place for pastime in the winter.

First floor



Second floor

