



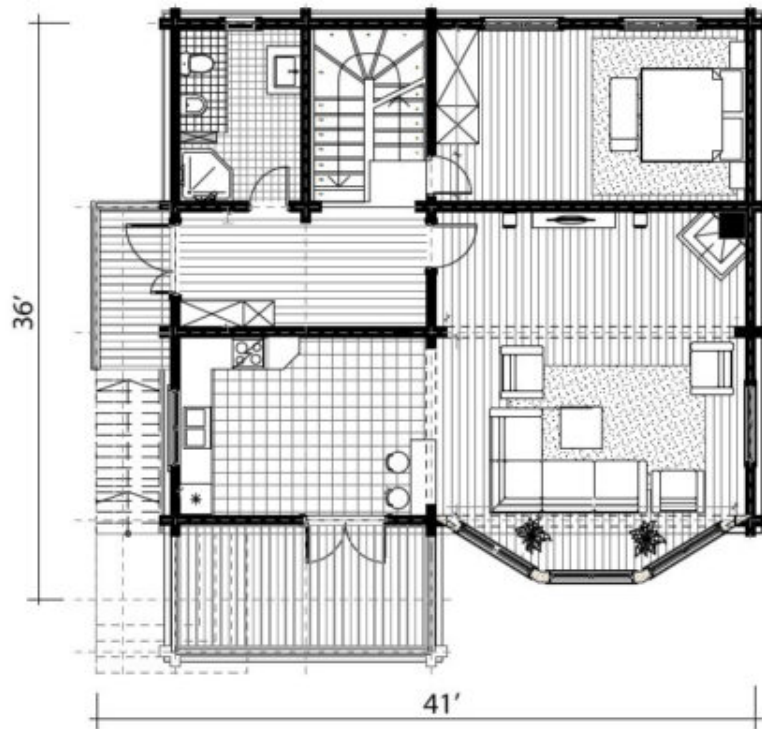
Design:	<b>CONTEMPORARY</b>
Floors:	<b>3+</b>
Gross area:	<b>3030 sq ft</b>
Net area:	<b>1960 sq ft</b>
Bedrooms:	<b>4</b>
Bathrooms:	<b>3</b>
Sauna:	<b>Yes</b>
Garage:	<b>Yes</b>
Carport:	<b>Yes</b>

A spacious house with a walk-out basement, a garage, and a sauna. A high brick basement, asymmetrical facades, railings on the porch and balcony, made with forging elements - all this adds charm to the chalet cottage. Panoramic glazing of the facade bay window provides excellent illumination for the living room and bedroom.

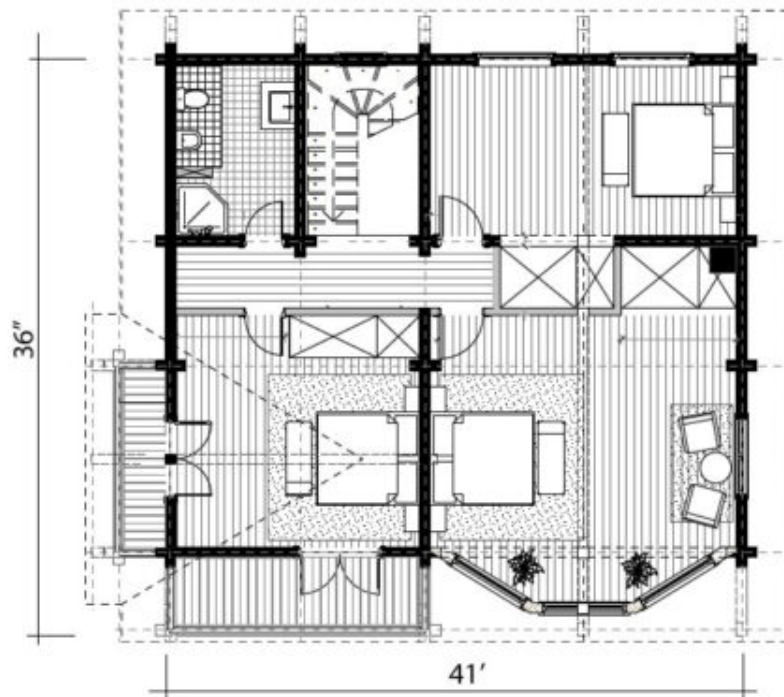
On the basement floor, there is a garage and a gym with additional rooms. On the first floor, there is a bedroom and a spacious kitchen-living room, from where, is access to a large terrace, where you can comfortably spend time in the warm season. The second floor is dedicated to the sleeping and

relaxation area.

First floor



Second floor



### Third floor

