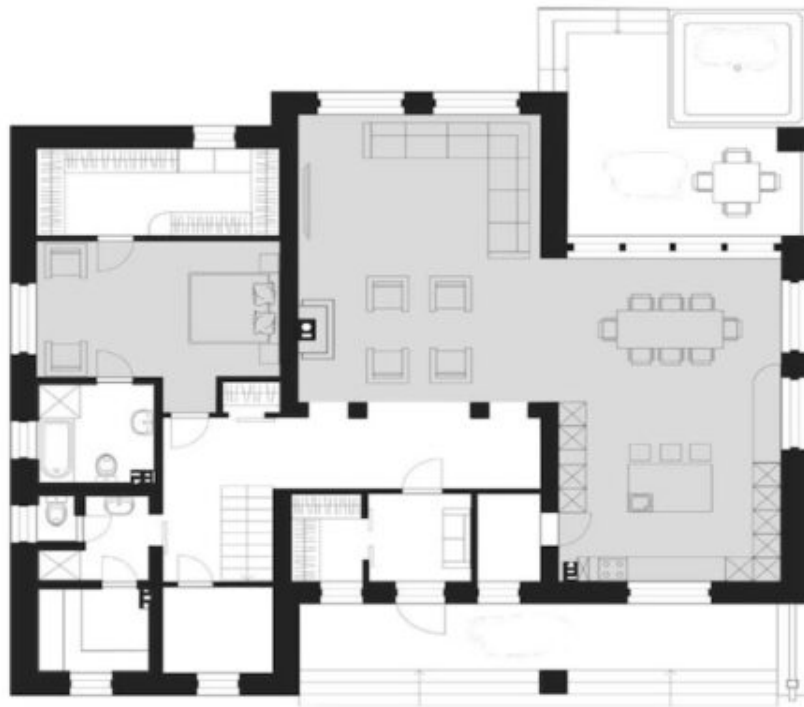




Design:	<b>CHALET</b>
Floors:	<b>2</b>
Gross area:	<b>4530 sq ft</b>
Net area:	<b>3720 sq ft</b>
Bedrooms:	<b>4</b>
Bathrooms:	<b>4</b>
Sauna:	<b>Yes</b>
Carport:	<b>Yes</b>

Log House Kit - Model 193, a durable home built with glue-laminated timber for enhanced strength and stability. The open layout creates a spacious, inviting living area. Glue-laminated timber offers superior resistance to warping and added structural integrity. Large windows fill the home with natural light, creating a bright atmosphere. Ideal for families, the Model 193 provides lasting comfort and durability. Its timeless design fits perfectly in any environment. Choose this home for its beauty, strength, and long-lasting performance, ideal for year-round living.

**First floor**



**Second floor**

