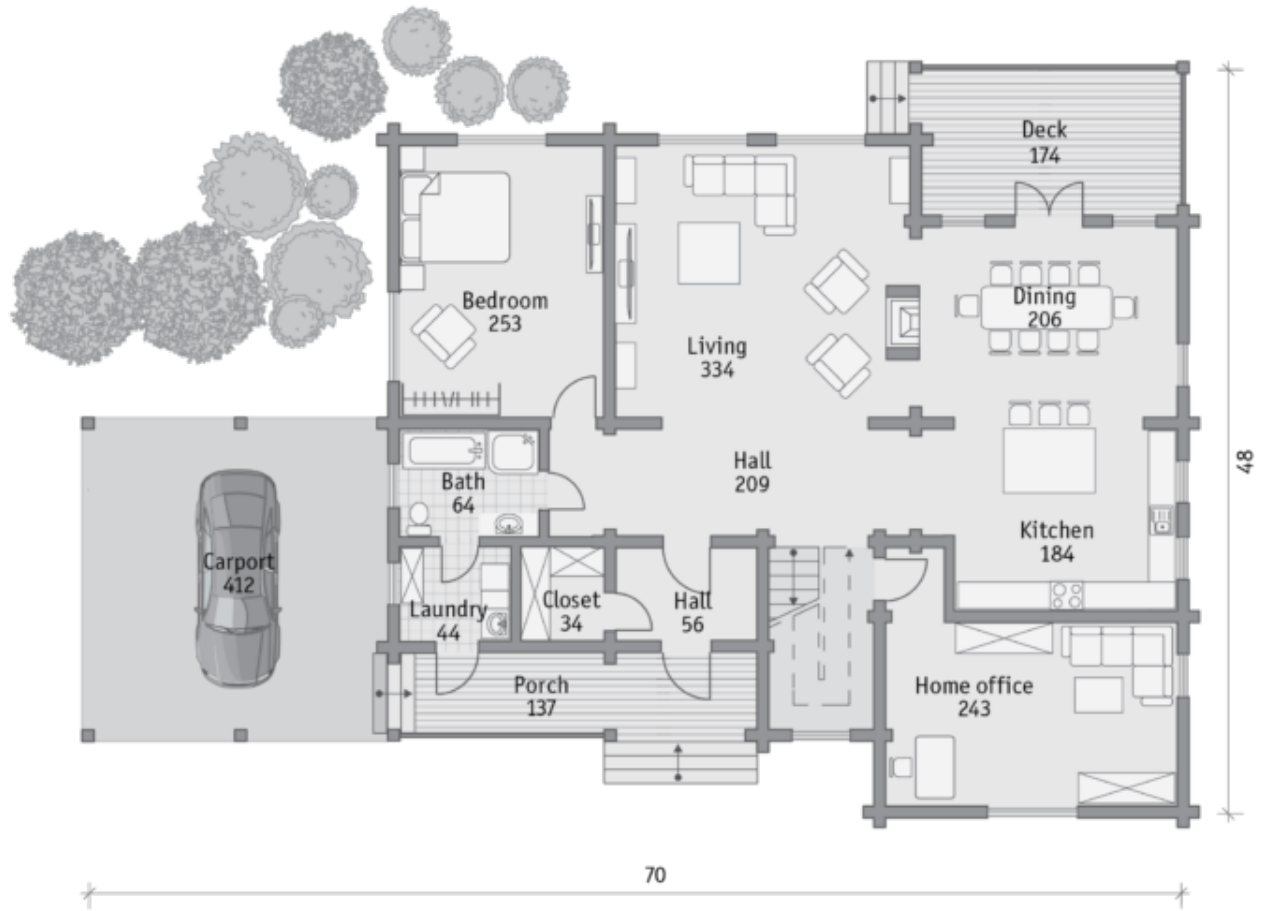




Design:	CONTEMPORARY
Floors:	2
Gross area:	3230 sq ft
Net area:	3030 sq ft
Bedrooms:	4
Bathrooms:	3
Carport:	Yes

On the first floor a double-lighted living room is combined with a kitchen and a dining room opening onto the terrace. On the second floor cozy bedrooms and a spacious hall create a special zone in the house where you can enjoy calm and peaceful privacy. Dormer windows installed in the bedrooms of the second floor will make the premises lighter and envelop them with a romantic flair.

First floor



Second floor

