



Design:	<b>TRADITIONAL</b>
Floors:	<b>1</b>
Gross area:	<b>4280 sq ft</b>
Net area:	<b>3560 sq ft</b>
Bedrooms:	<b>6</b>
Bathrooms:	<b>3.5</b>
Carport:	<b>Yes</b>

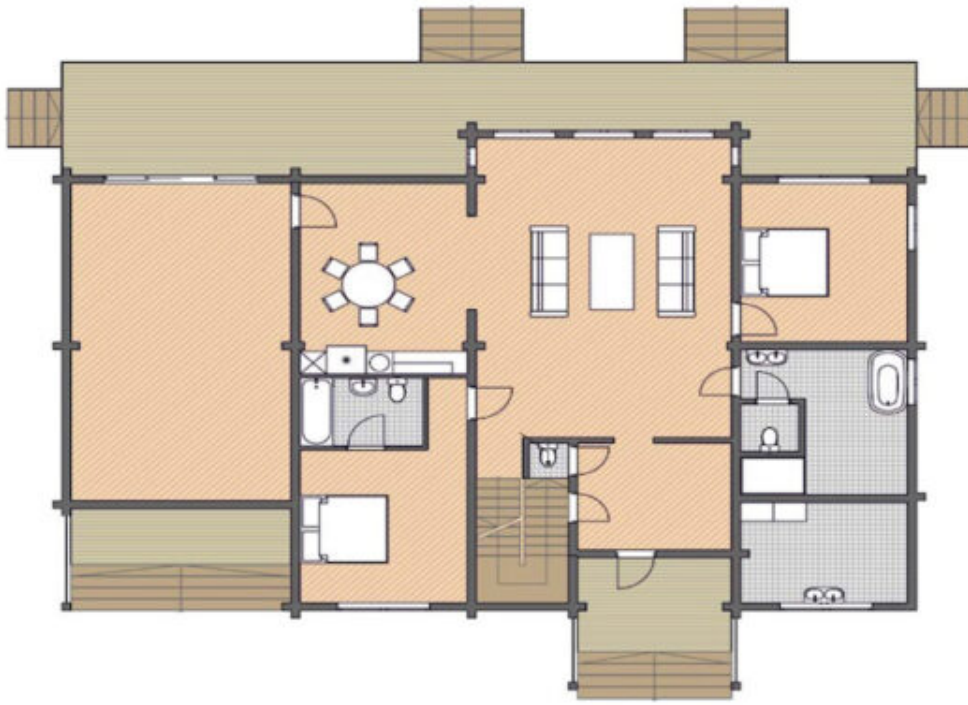
This house is ideal for the suburban life of a family seeking peace and refinement. The presence of large windows and glass doors makes the cottage brighter and creates a sense of additional volume. The railing of the terrace emphasizes the splendour of the facade.

The entrance to the house is through a small porch or through the doors of a one-story glazed veranda. The house has eight spacious rooms - for the owners themselves, their children and, of course, guests.

On holidays, the whole family will be united by a large living room on the ground floor.

And on weekdays, family meals are held at a large table in the spacious kitchen.

## First floor



## Second floor

