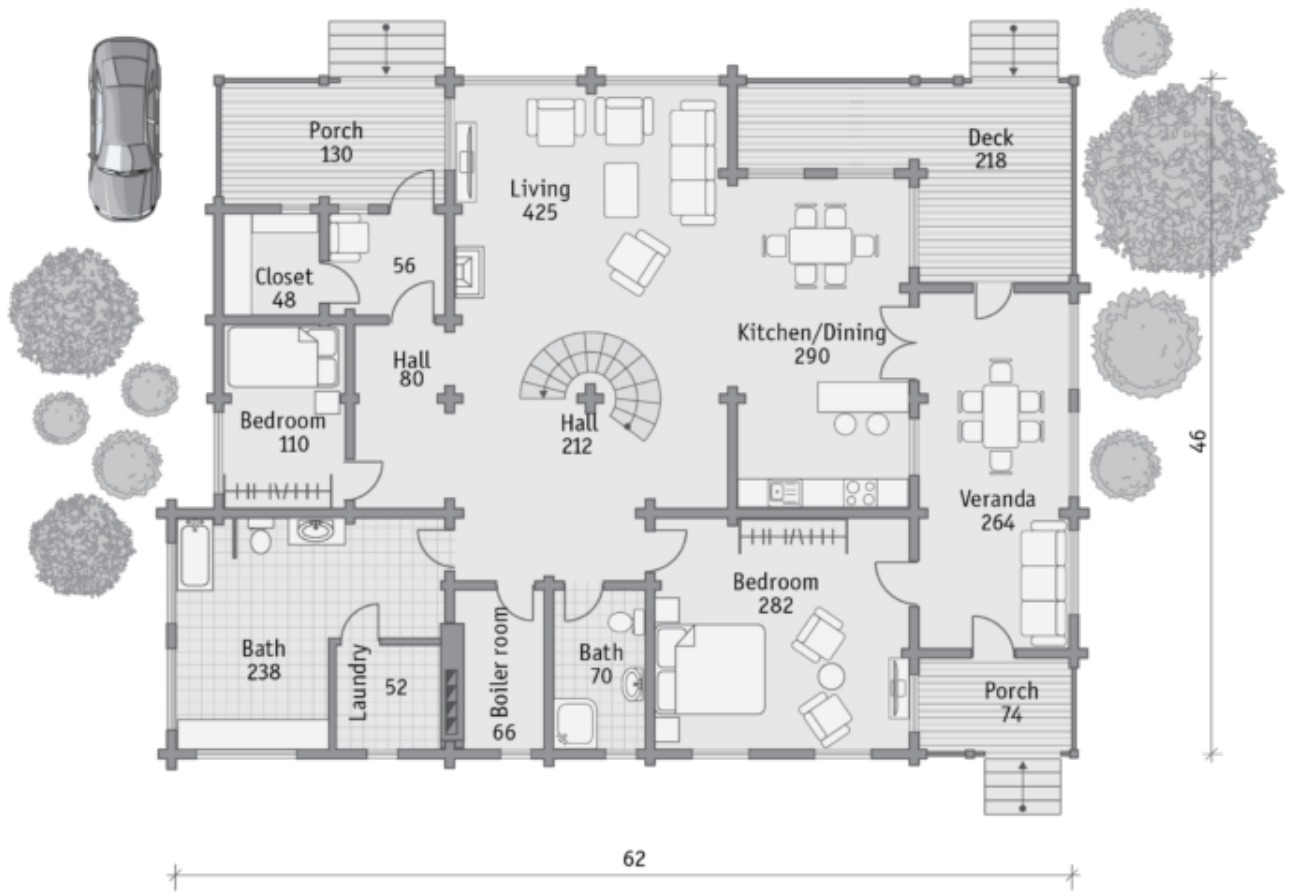




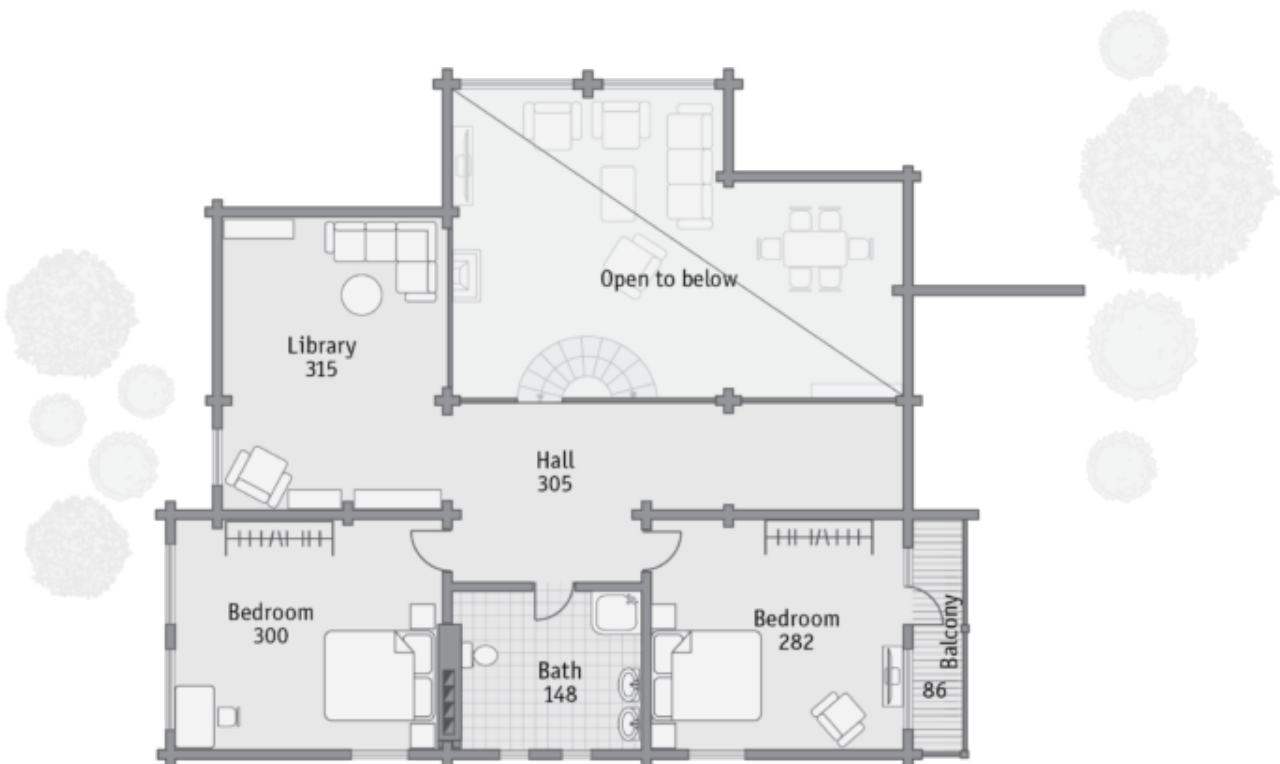
Floors:	<b>2</b>
Gross area:	<b>4060 sq ft</b>
Net area:	<b>3550 sq ft</b>
Bedrooms:	<b>4</b>
Bathrooms:	<b>3</b>
Carport:	<b>Yes</b>

The central room is an extensive studio with a spiral staircase leading to the second floor. Open space layout of the common zone of the first floor includes a hall, a dining room, a kitchen and a living room, combined with an attached veranda and terraces, which enhance the possibility of entertaining guests and separate use of the house, for example, if there are grown children in the family.

## First floor



## Second floor









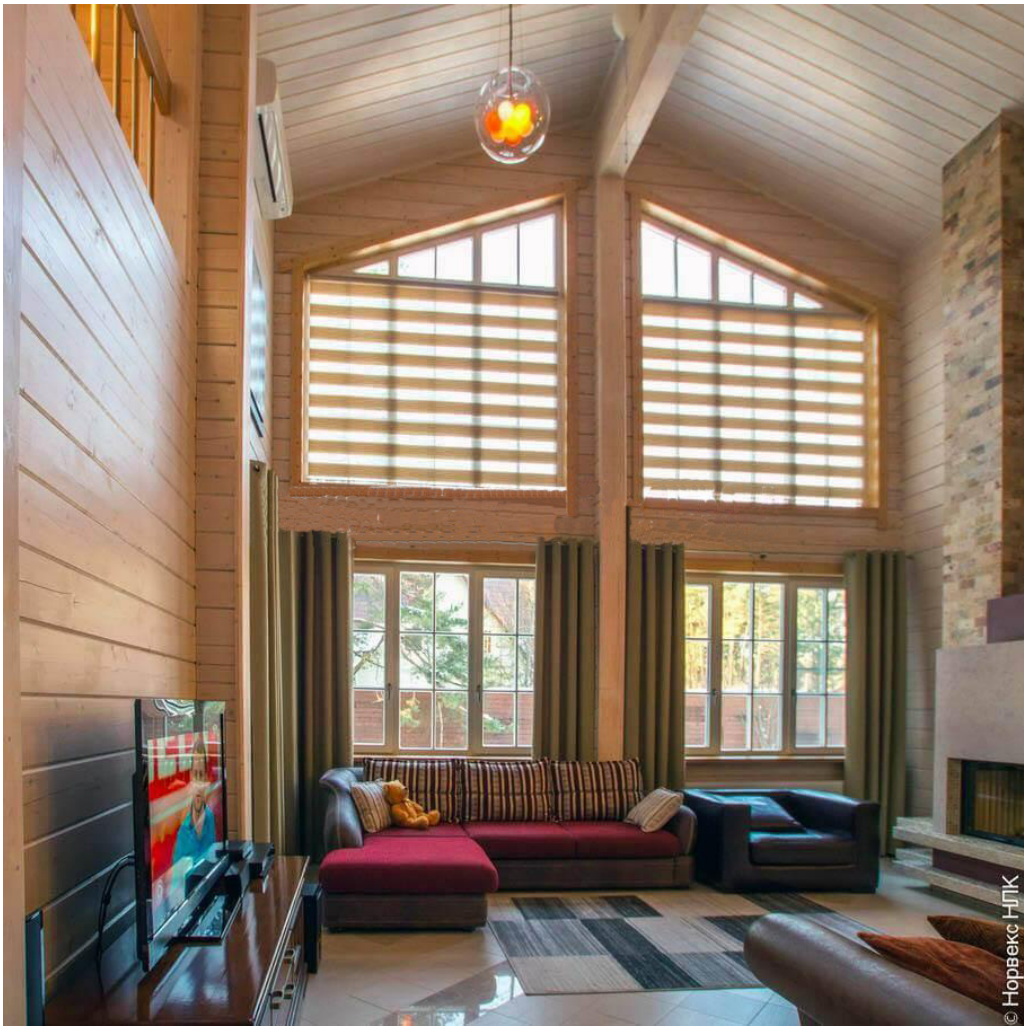












© Норвекс НЛК



