



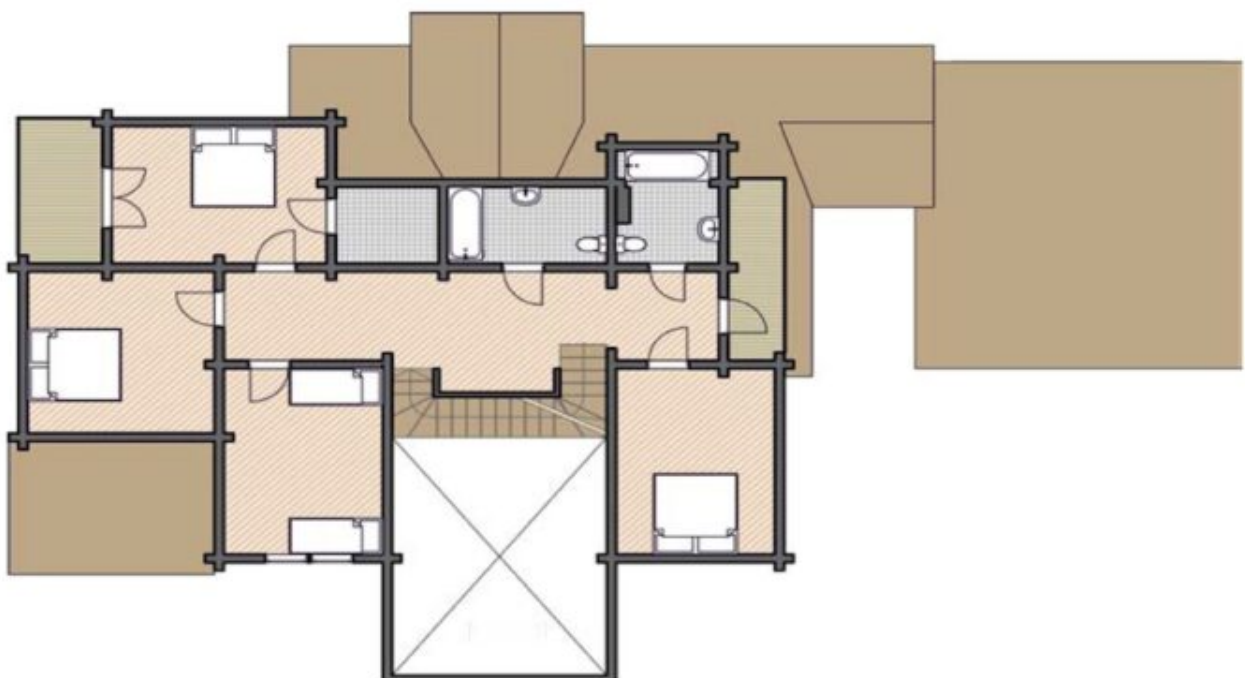
Design:	SCANDINAVIAN HOME
Floors:	2
Gross area:	5050 sq ft
Net area:	3790 sq ft
Bedrooms:	6
Bathrooms:	5
Sauna:	Yes
Carport:	Yes

Prefabricated Log House Kit - Model 387, a robust home crafted from glue-laminated timber for superior strength and stability. The open floor plan creates a spacious living area. Glue-laminated timber offers excellent durability, resistance to warping, and increased load-bearing capacity. Large windows brighten the interior with natural light, creating a warm, inviting atmosphere. Ideal for families, the Model 387 offers a long-lasting and comfortable living space. Its timeless design complements any setting, making it perfect for year-round living. Choose this home for strength, beauty, and durability that stands the test of time.

First floor



Second floor



Third floor

