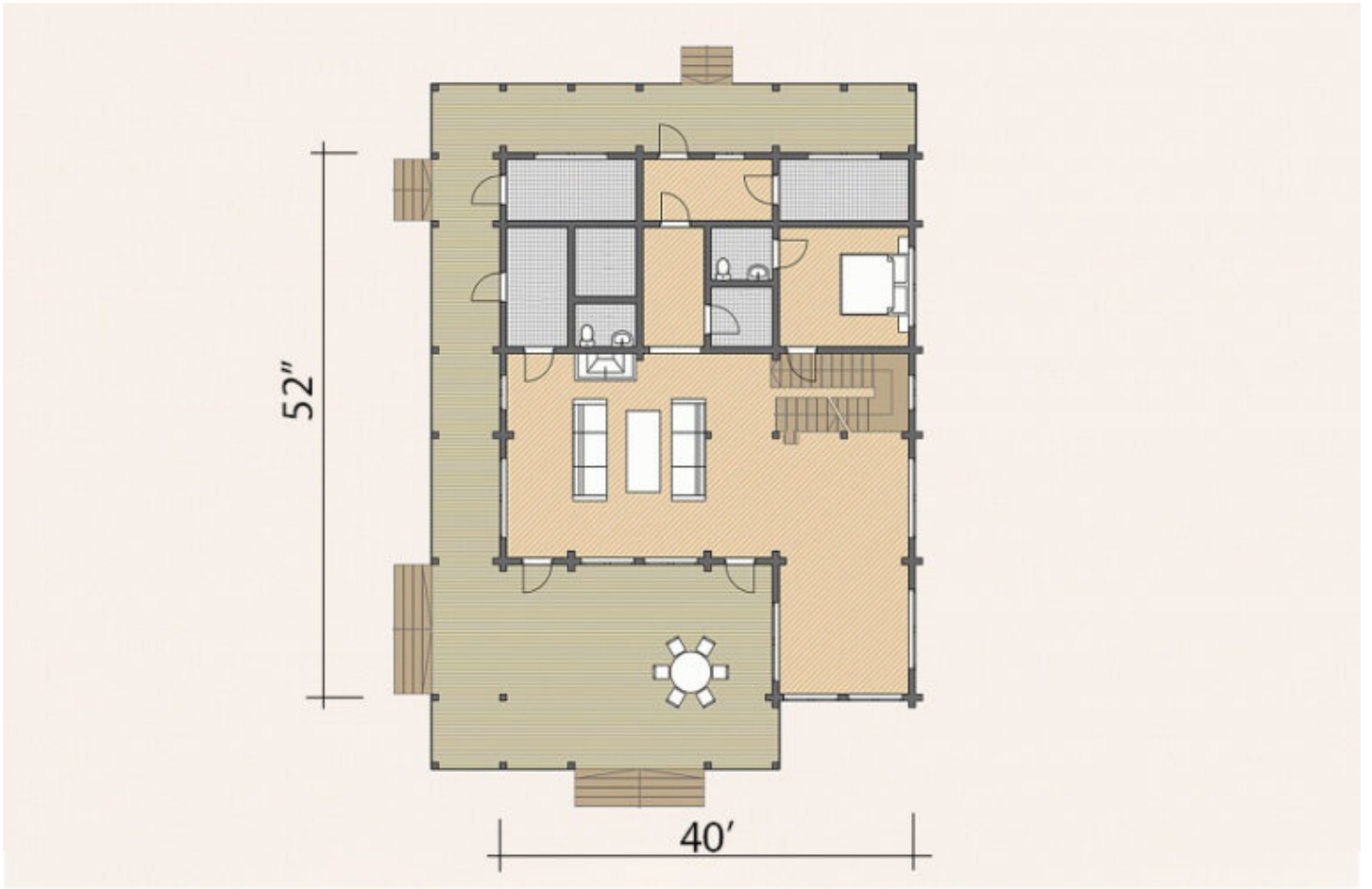




|             |                     |
|-------------|---------------------|
| Design:     | <b>CONTEMPORARY</b> |
| Floors:     | <b>2</b>            |
| Gross area: | <b>4410 sq ft</b>   |
| Net area:   | <b>2860 sq ft</b>   |
| Bedrooms:   | <b>5</b>            |
| Bathrooms:  | <b>4</b>            |
| Carport:    | <b>Yes</b>          |

The two-storey house in a modern style has a large outdoor terrace and a balcony with panoramic windows. When developing the project of the house, the architects used elements of the prairie style: the dominance of horizontal lines, strict angular forms, a flat shed roof. Thanks to this solution, the facades of the house harmoniously complement the environment, and daylight enters the interior through the large windows.

### First floor



### Second floor

