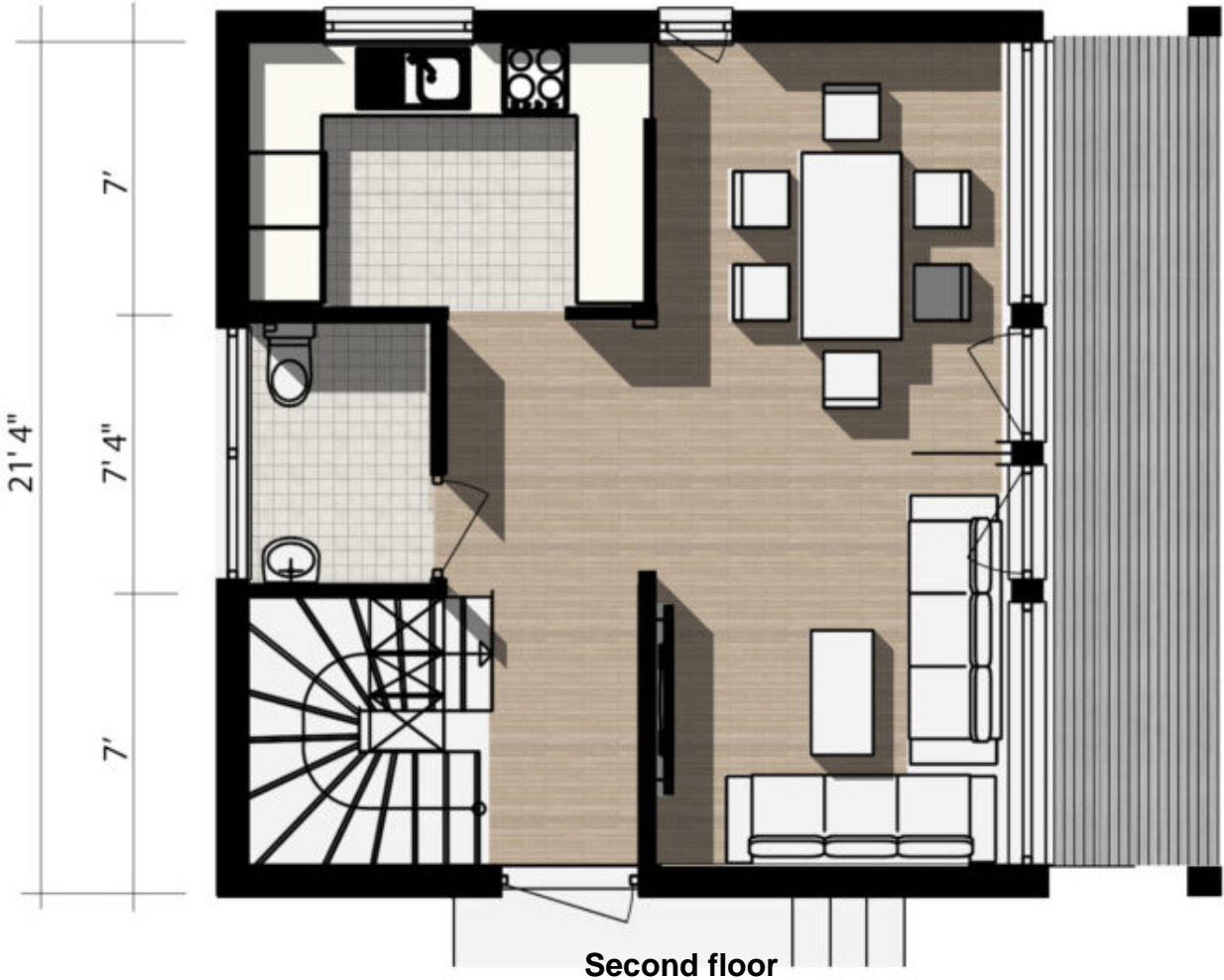




Floors:	<b>2</b>
Gross area:	<b>1100 sq ft</b>
Net area:	<b>840 sq ft</b>
Bedrooms:	<b>2</b>
Bathrooms:	<b>2</b>
Carport:	<b>Yes</b>

Solid Wood House Kit - CLT Model 100-B Barn, a beautifully crafted two-story home that blends traditional barn-style design with modern functionality. The spacious open-concept layout features expansive living, dining, and kitchen areas, ideal for both family gatherings and entertaining. Built with high-quality Cross-Laminated Timber (CLT), this home offers outstanding durability and sustainability. Large windows allow natural light to fill the interior, creating a bright and inviting atmosphere. Perfect for year-round living or as a countryside getaway, the Model 100-B Barn can be fully customized to suit your unique style and needs.

First floor



Second floor







