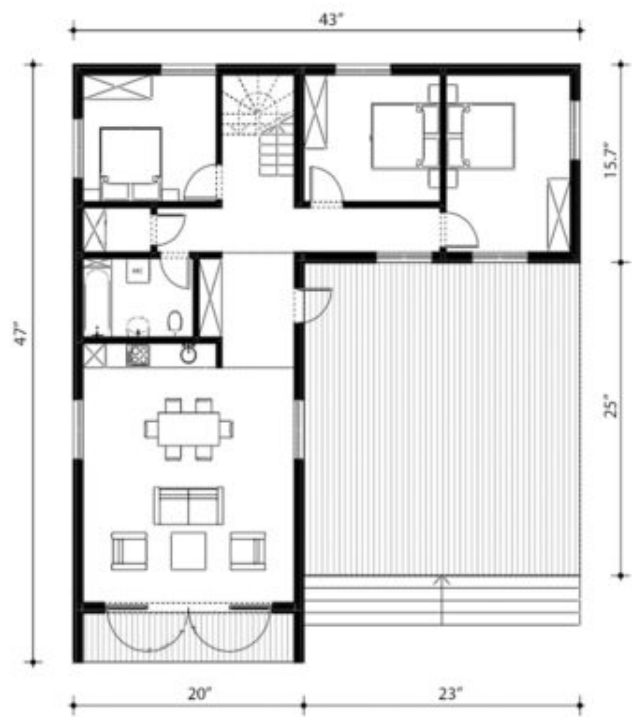




Floors:	2
Gross area:	2100 sq ft
Net area:	1430 sq ft
Bedrooms:	4
Bathrooms:	1
Carport:	Yes

Solid Wood House Kit - CLT Model 195, a modern, sustainable home designed with both style and practicality in mind. This two-story house features a spacious, open-concept layout on the first floor, seamlessly integrating the living, dining, and kitchen areas to create an ideal space for family gatherings and entertaining. The upper floor offers private, cozy bedrooms that provide both comfort and tranquility. Manufactured using high-quality Cross-Laminated Timber (CLT), this home offers exceptional durability, energy efficiency, and a natural, eco-friendly aesthetic. Perfect for year-round living or as a contemporary retreat, Model 195 can be fully customized to suit your lifestyle.

First floor



Second floor











